



## SMX SERIES

# SMX 800 TURBO

Ref : MX001T



## DESCRIPTION

- Special huge volumes, collective kitchens and intensive use.
- The new cooling technology ensures longer life to the mixer.
- Detachable mixer tool that can be easily dismantled.
- All stainless steel mixer tool and handle support.
- Double insulation.
- Titanium-plated blade easy to remove.
- Easy manipulation into the plot thanks to its specific support bracket.
- The continuous function auto run button allows to mix continuously or pulse.

### ACCESSORIES



Included : Mixer hook support.



Supports brackets for your safety and your comfort.

## USE

The SMX 800 Turbo has been designed to work in containers holding up to 300 liters. It allows you to blend purees, mix and emulsify directly in the cooking pot.

Indispensable for the preparation of soups, salad dressings, gravy, sauces, mayonnaise, refried beans, batters, and many other products.

**Capacity : 75 to 300 L.**

## MAINTENANCE

Clean the outside of the tube and the blade protector by passing it under the faucet. Beware of splashing that could penetrate through the engine's ventilation slots and damage it.

**Never clean this machine with water jet spray or in the dishwasher.**

Wash the motor block with a sponge or with a slightly damp cloth.



### TECHNICAL DATA

OUTPUT MAX	1000 W
SPEED	11 000 R.P.M.
VOLTAGE	110-120 V or 220-240 V
TOTAL LENGTH	960 mm
SHAFT LENGTH	680 mm
DIAMETER	125 mm
ACTUAL WEIGHT	6,7 kg

[www.dynamicmixers.com](http://www.dynamicmixers.com)

Dynamic - 518 rue Léo Baekeland BP57 - 85290 Mortagne sur Sèvre

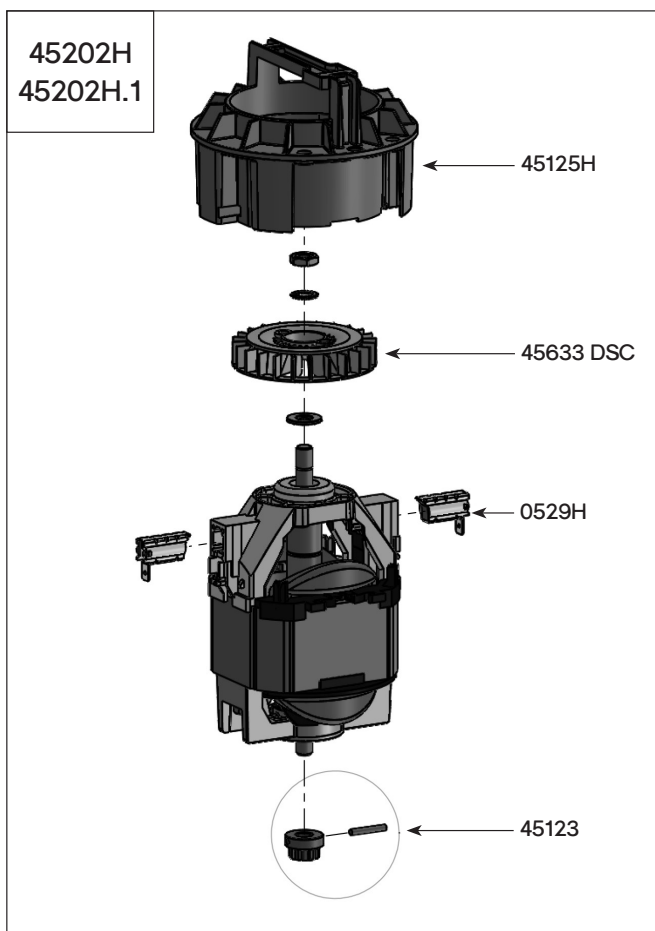
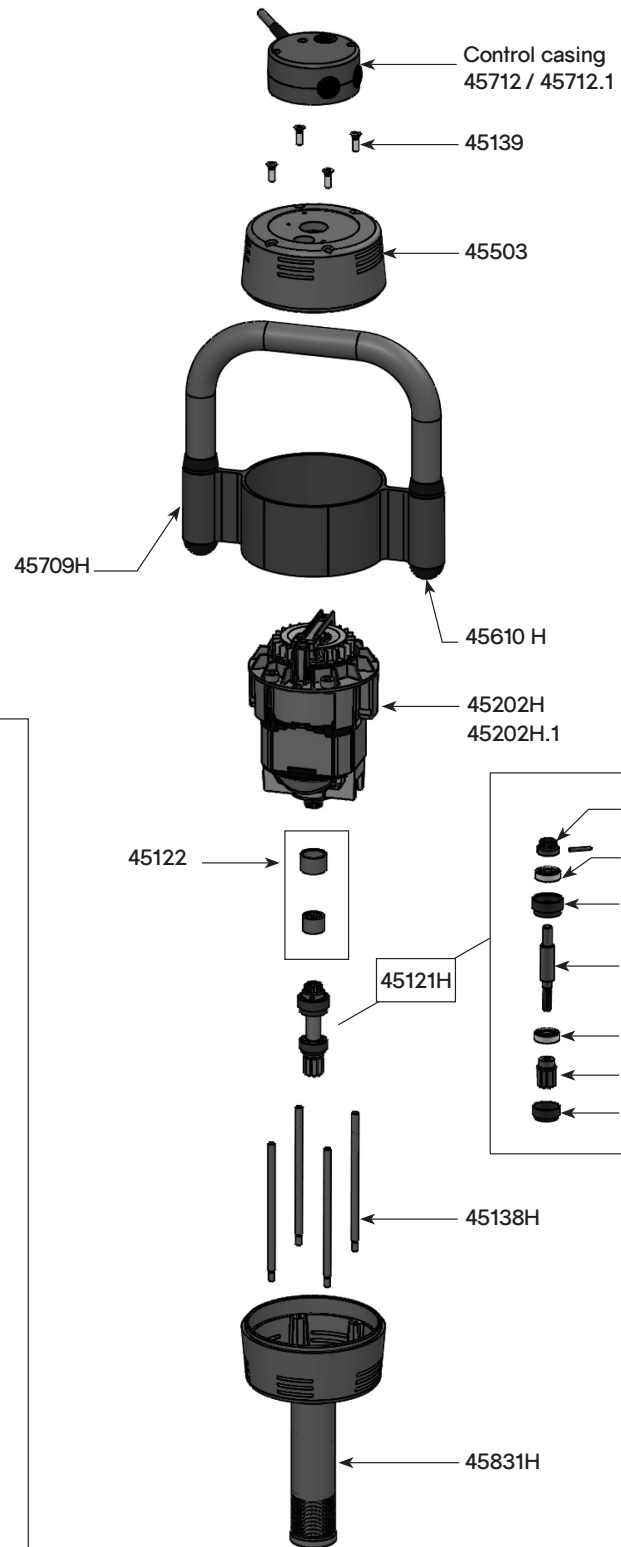
Tel : +33 (0)2 51 63 02 72 • E-mail : [export@dynamicmixers.com](mailto:export@dynamicmixers.com)

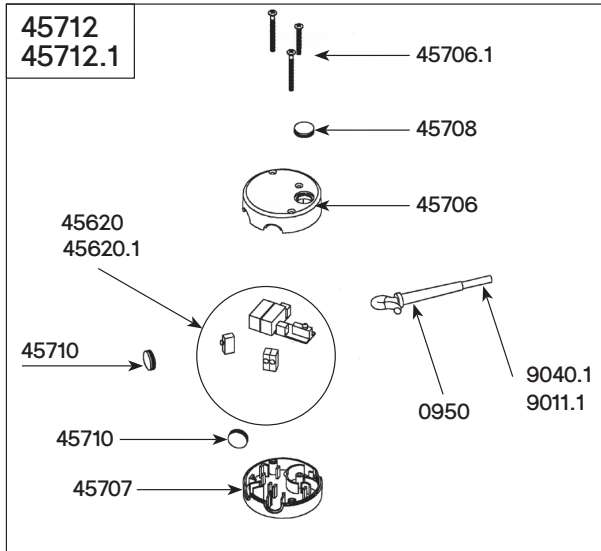
Follow us on social networks!



# TECHNICAL SHEET

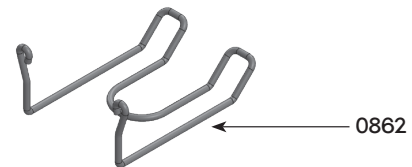
Parts list	Code
Carbon brushes (pair)	0529H
Ball bearing	0601i
Equipped output axle	0807H
Ball bearing ring	119950
Ball bearing ring	119964
Output shaft	45121H
Coupling sleeves	45122
Motor & shaft drive sprocket	45123
Fan housing Plastic	45125H
Braces (4)	45138H
Brace screws (4)	45139
Motor 220-240 V	45202H
Motor 110-120 V	45202H.1
Top housing	45503
Handle cap (2)	45610H
Plastic Fan	45633DSC
Sleeve & complete handle & label & cap	45709H
Complete control casing 230V	45712
Complete control casing 115V	45712.1
Lower housing	45831H



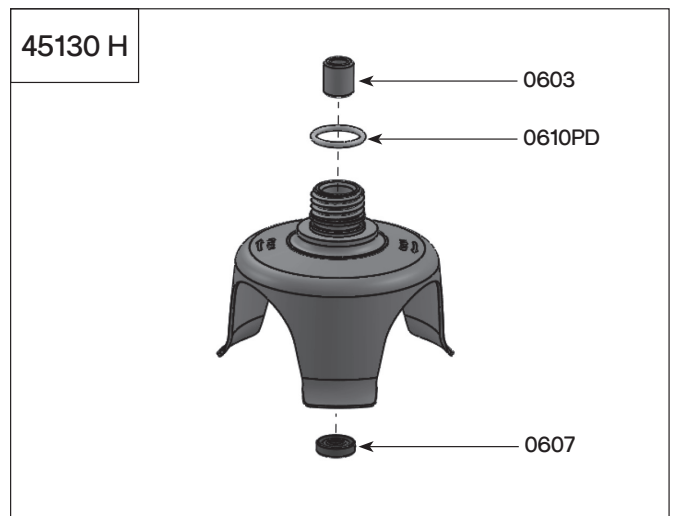


## SMX 800 TURBO Attachment - Ref AC076T (Complete Attachment)

Parts list	Code
Ball bearing	0601i
Self-lubricating ring	0603
Waterproof seal	0607
O. ring	0610PD
Toric seal	0641
Wall bracket	0862
Strain relief 230 V	0950
Ball bearing ring	7912
Power cord 230 V	9011.1
Motor & shaft drive sprocket	9028
Power cord 115 V	9040.1
Coupling casing + pin	9051H
Removable complete bell	45130H
Cutter blade w/ screw	45161
Shaft & bearing	45324
Food assembly	45325
Circuit board 230 V	45620
Circuit board 115 V	45620.1
Top housing (orange plastic piece)	45706
Screws control case set	45706.1
Lower housing (orange plastic piece)	45707
Handle cap protector (unit)	45708
Handle cap protector (unit)	45710



45324



SM 4/6/8/10/12 MIXER SUPPORTS

Parts list	Code
Tightening knob	0701
Tightening knob	0707
White knob (x2)	0728
Plastic caps	45610
Plastic holder for tube	45900
SENIOR plastic holder for tube	45900.S
Orange half moon + screws + washer	45900.1
SENIOR orange half moon + screws + washer + block	45900.2
60 mm width bracket	45901
20 mm width bracket	45902
Exterior stop (x2)	45610.S

